

# PLUMBING—ABS/DWV

## ABS/DWV FOAM CORE PIPE



Thick wall, heavy-duty black ABS foam-core pipe for rigid code requirements

53-2100 1-1/2" x 10'  
 53-2104 2" x 10'  
 53-6000 3" x 10' PVC

## LONG-TURN TEE



50-1925 3" x 3" x 1-1/2"; 10/box  
 50-1928 3" x 3" x 2"; 10/box  
 50-1924 3"; 10/box

## HUB SANITARY TEE



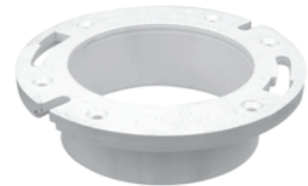
50-1933 3"; 20/box

## HUB REDUCING SANITARY TEE



50-1941 3" x 3" x 1-1/2"; 20/box  
 50-1940 3" x 3" x 2"; 20/box

## CLOSET FLANGE



50-1952 4" x 3"

## DOUBLE 90° BEND



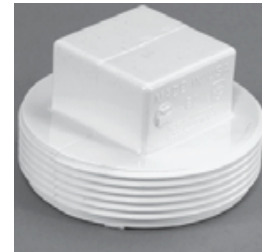
50-2006 3"; 10/ctn

## CLEANOUT ADAPTER



50-1882 3"; 25/box

## CLEANOUT PLUG



50-1890 3"; 25/box

## 45° ELBOW



50-2025 3"; 25/box

## FLUSH BUSHING



50-1871 3" x 1-1/2"  
 50-1874 3" x 2"

## 22-1/2° ELBOW



50-2030 3"; 25/box

# PLUMBING - PVC

## LONG SWEEP 90°



50-1911 3"; 20/box

## COUPLING



50-1865 3"; 50/box

## P-TRAP w/UNION



50-1948 1-1/2"

## 45° ELBOW



51-9121 3/4" S x S; 50/box

## 90° ELBOW



51-9132 3/4" S x S; 50/box

## COUPLING



51-9031 3/4" S x S;  
50/box

## FEMALE ADAPTER



51-9091 3/4" S x FPT;  
50/box

## TEE



51-9052 3/4" S x S x S;  
25/box

## MALE ADAPTER



51-9005 3/4" S x MPT;  
50/box

## PVC SCHEDULE 40 PIPE



53-6070 3/4" x 20'  
53-6000 3" x 10'

## BALL VALVE



51-9150 3/4" S x S

## TUFF-PEX TUBING



57-2000 3/8"  
57-2050 3/4"  
57-2100 1/2"

# PLUMBING—JG SPEEDFIT

## COUPLER



51-5500 1/2"  
51-5505 3/4"

## STRAIGHT SHUT OFF VALVE



51-5578 1/4"  
51-5580 3/8"  
51-5582 1/2"

## UNION ELBOW



51-5535 1/2"  
51-5540 3/4"

## MALE CONNECTOR



cts x npt

51-5510 1/2" x 1/2"  
51-5515 3/4" x 1/2"  
51-5520 3/4" x 3/4"

## REDUCING TEE



51-5550 1/2" x 1/2" x 3/4"  
51-5560 3/4" x 3/4" x 1/2"  
51-5565 3/4" x 1/2" x 1/2"  
51-5570 3/4" x 1/2" x 3/4"

## UNION TEE



51-5545 1/2"  
51-5555 3/4"

## FEMALE SWIVEL CONNECTOR



51-5525 1/2" fpt

## FEMALE SWIVEL ELBOW



51-5530 1/2" fpt

## FEMALE BALLCOCK CONNECTOR



51-5572 1/2" cts x 7/8"-15/16" uns

## PIPE INSERT



51-5588 1/2"  
51-5590 3/4"

## REDUCER



51-5592 5/8" x 1/4"  
51-5594 5/8" x 3/8"  
51-5596 5/8" x 1/2"  
51-5598 3/4" x 1/2"

## END CAP



51-5574 1/2"  
51-5576 3/4"

# PLUMBING

## PRESSURE RELIEF VALVE



52-0105 3/4"

## WATER HEATER ELEMENT WRENCH



52-0110

## WATER HEATERS

- 52-0002 20 gal. electric
- 52-0003 30 gal. electric; short
- 52-0005 30 gal. electric; tall
- 52-0010 30 gal. electric; 110v
- 52-0022 40 gal. electric
- 52-0025 50 gal. electric



## ELECTRIC THERMOSTAT



Replacement for any electric, domestic water heater.

- 52-0060 Upper
- 52-0095 Lower
- 52-0100 2 pole
- 52-0101 1 Pole

## SCREW-IN IMMERSION

Fits many models, includes one gasket.

- 52-0040 1500 watt 120v
- 52-0050 3500 watt 240v
- 52-0055 4500 watt 240v
- 52-0070 4500 Watt Universal



## WATER HEATER DRIP PAN



52-0035 20"

## WATER HEATER CONNECTOR



- 52-0085 3/4" FIP x 3/4" x 24"
- 52-0080 3/4" - 18" long brass

## PIPE INSULATION



52-4000 1" x 6'

## FAUCET SUPPLY LINE



54-2030 1/2" x 20"

## HEAT CABLE PLUG KIT



52-4010 Frostex

## HEAT CABLE REEL



Constant heat; cut to length

52-4015 1" x 6'

# PLUMBING

## FROST PROOF SILLCOCK



52-4050 10" - 3/4"

## CHECK VALVE



Brass with stainless steel rings. 3/4" FPT x 3/4" MPT

52-4022

## WATER REGULATOR



3/4" x 3/4" FPT

52-4035 Cash-Acme

## STOP VALVE



52-4025 1/2" Brass  
52-4030 3/4" Brass

## TEFLON TAPE



52-4055

## PIPE HANGER STRAP



52-4040 100/ft  
52-4045 10/ft; 50/box

## PURPLE PRIMER

All purpose primer/cleaner for PVC/CPVC pipe and fittings. Removes surface dirt and softens pipe surface.



70-0755 4oz  
70-0760 16oz

## CEMENT

70-0825 All purpose 16oz  
70-2620 ABS 16oz



## RAIN-R-SHINE

Fast setting blue PVC cement for solvent welding under damp conditions.

70-0893 8oz  
70-0895 16oz



## TRANSITION GLUE



70-0745 8 oz  
70-0750 16 oz

## PLUMBERS PUTTY



70-6000

## VENT CAP



52-2049 Plastic 2-1/2"  
52-2084 Steel 2-3/8"