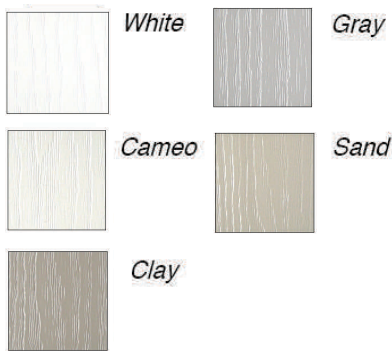


EXTERIOR IMPROVEMENTS

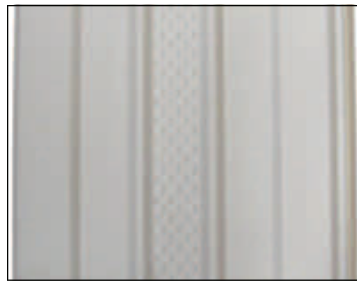
Vinyl Skirting



- 16" Wide Panels
- Rich Wood Grain Texture
- Choice of Five Colors
- Homeowner's Warranty
- Vented Panels
- Trim Kits with Hardware
- U-Shaped Ground Channel



Due to the printing process, colors shown are only approximations.



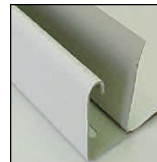
CENTER-VENT PANEL

Each panel 11' 8" long • 16" exposure; 12 panels/carton

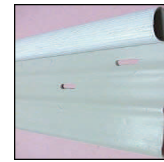
TRIM KIT

14 Pieces—Top mount, top front, ground channel • 11' 7.25" long Factory-notched corners

200 Nails, 100 7-in. ground spikes



Ground



Top Back



Top Front

DESCRIPTION	WHITE	GRAY	CLAY	SAND	CAMEO
CENTER-VENT PANEL	30-4001	30-5001	30-6001	30-7001	30-8001
TRIM KIT	30-4002	30-5002	30-6002	30-7002	30-8002
GROUND	30-4003	30-5003	30-6003	30-7003	30-8003
TOP MOUNT	30-4004	30-5004	30-6004	30-7004	30-8004
TOP FRONT	30-4005	30-5005	30-6005	30-7005	30-8005

ALUMINUM HANDLE SNIPS

Handle gives strength of steel with only half the weight. Straight cuts through the hardest sheet metal and vinyl. Extended tips reach all the way into corners. 3" cut.



84-1012

VAPOR BARRIER

30-9015
16' x 100' 6 mil

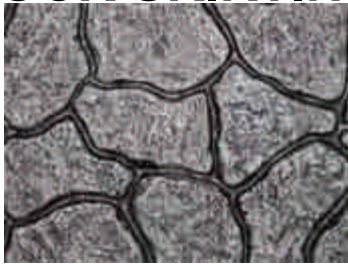


EXTERIOR IMPROVEMENTS

ROCK SKIRTING



Brown



Grey



Sand



32-2808 Black Vent
32-2810 Sand Vent

- 32-2740 36" x 5' Grey Panel
- 32-2743 36" x 5' Brown Panel
- 32-2746 36" x 5' Sand Panel
- 32-2741 48" x 5' Grey Panel
- 32-2744 48" x 5' Brown Panel
- 32-2747 48" x 5' Sand Panel



METAL STUD
30-9005 10' x 6" 25ga

BRICK SKIRTING

All the beauty of brick without the high cost...

In a variety of attractive styles

SPECIAL ORDER ITEM...CALL FOR PRICING



Used Red



Used Bluff



CORNERS

Exposed: 4" x 4" x 18"

PANELS

Overall: 44-5/8" W x 18-3/4" H
Exposed: 39-3/4" W x 17-1/2" H

ACCESS DOORS



24" x 36"

32-2795

FIBERGLASS STEPS



Call for a quote on a size not listed

- Steps constructed of heavy-duty treated plywood and 2 x 4s designed to last decades even under heavy water contact.
- Deep-penetrating treatment protects all exterior wood against rotting and other decay.
- Fiberglass and resin exterior coating provides strength and durability.
- White exterior with special "Black Buckshot" finish for added visual appeal.
- Slip-resistant texture on all treads and landings for additional safety.

White	Description H = Height; D = Depth; W = Width	BOCA Side Rail
12-2438	3-Step 24"H x 38"D x 38"W	13-2924
12-3238	4-Step 32"H x 38"D x 38"W	13-2932
12-4038	5-Step 40"H x 38"D x 38"W	13-2940
12-4838	6-Step 48"H x 38"D x 38"W	13-2948